

# South Gloucestershire Landscape Character Assessment

## Annex II: Strategic Viewpoints

### South Gloucestershire Council

**Final Draft Report for Adoption Chapter 6**

Prepared by LUC

September 2024



Version	Status	Prepared	Checked	Approved	Date
1	Draft Method and Pilot	E White L Jewitt	K Davies	K Davies	03.04.2023
2	Draft Report	L Jewitt V Kakar	E White	K Davies	16.05.2023
3	Draft Report	E White L Jewitt	E White	K Davies	14.07.2023
4	Final Draft	E White L Jewitt	E White	K Davies	01.11.2023
5	Final Draft (updated following New Local Plan Phase 3 consultation)	L Jewitt	E White	K Davies	12.06.2024
6	Final Draft Report for Adoption	L Jewitt	E White	K Davies	11.09.2024



**Land Use Consultants Limited**

Registered in England. Registered number 2549296. Registered office: 250 Waterloo Road, London SE1 8RD. Printed on 100% recycled paper

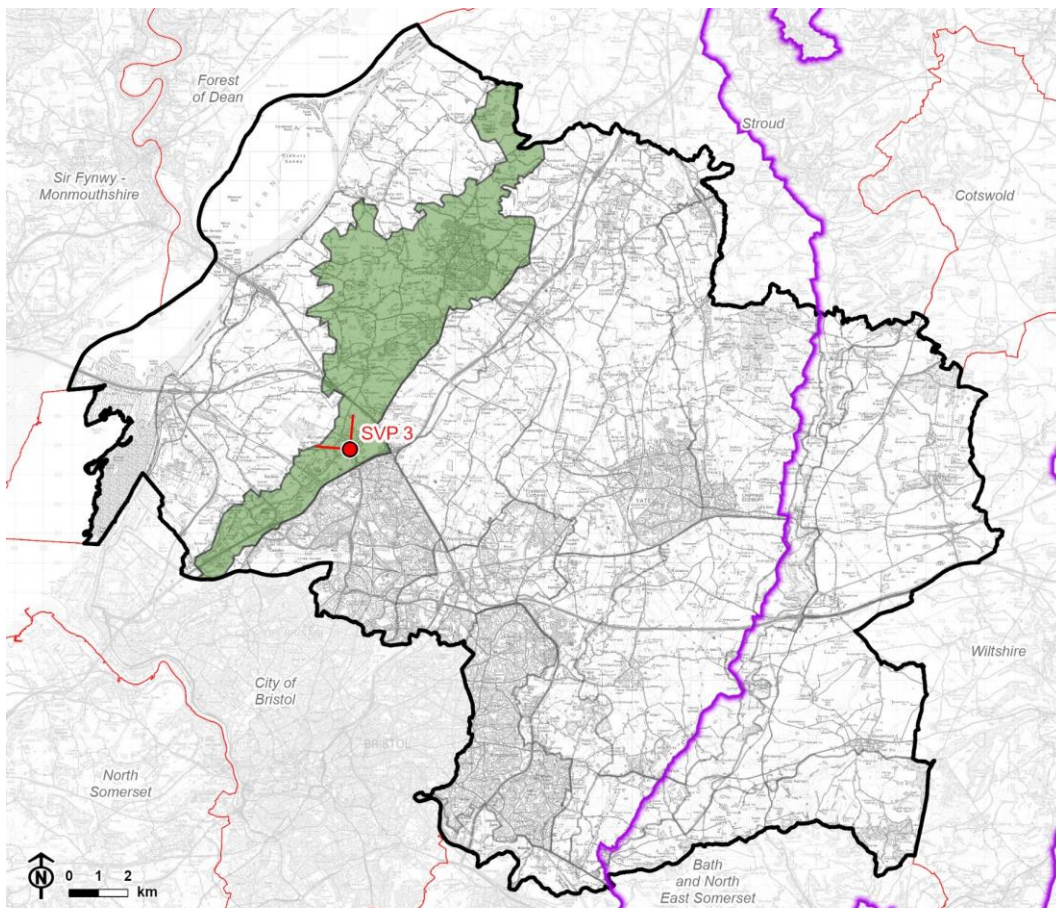
# Contents

<b>Chapter 6</b>	<b>32</b>
Strategic Viewpoint 3: Almondsbury Scenic Viewpoint	
Characteristics	37
Summary	38
<b>References</b>	<b>39</b>

# Chapter 6

## Strategic Viewpoint 3: Almondsbury Scenic Viewpoint

Figure 6.1: Location of Strategic Viewpoint 3 and landscape character context

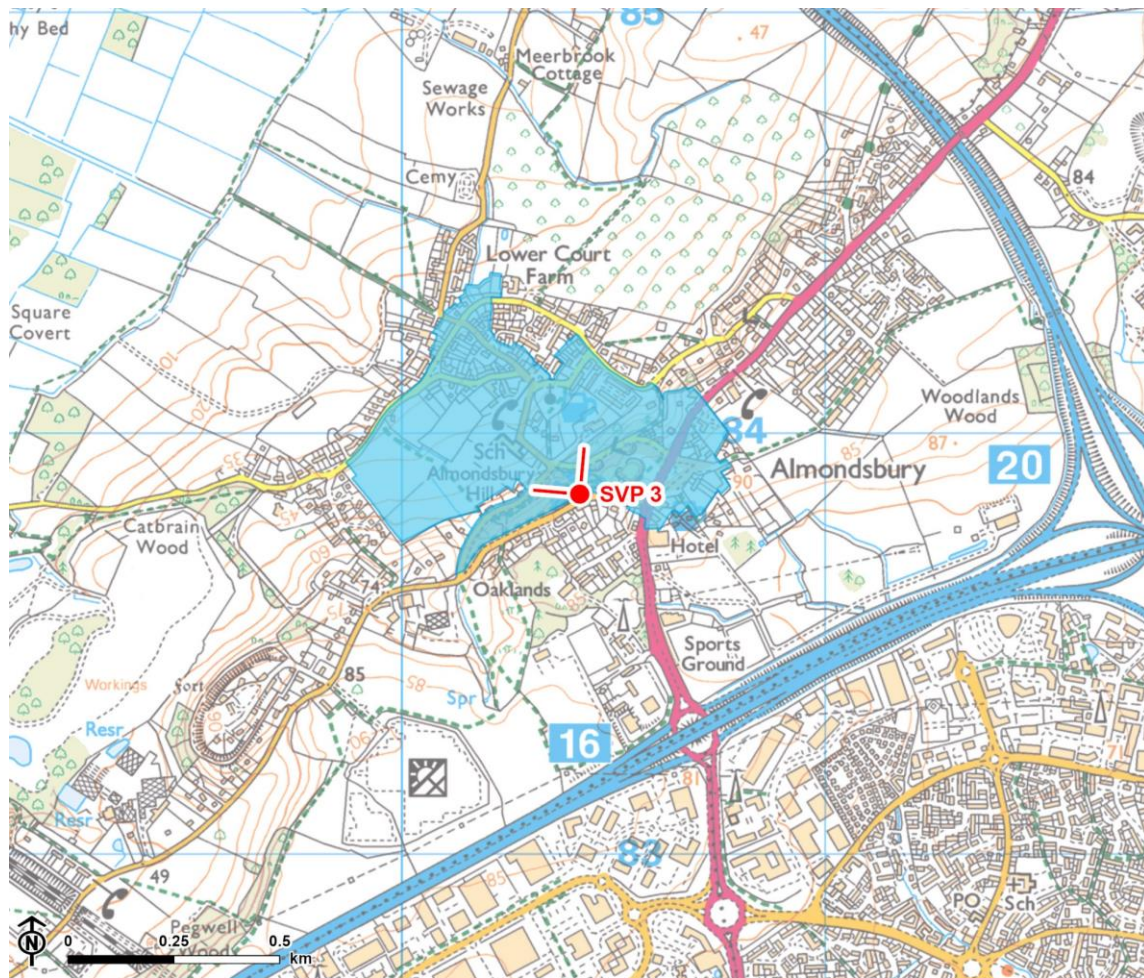


© Natural England copyright © Crown copyright and database rights, Ordnance Survey licence number 100023410 (2024).

CB:HS, EB:shayler\_h LUC 12274\_FiguresUpdates\_MayJune2024 07/06/2024  
Source: LUC, SGDC, NE, OS

-  Council boundary
-  Neighbouring local authority
-  Cotswolds National Landscape (AONB) boundary
-  LCA 18: Severn Ridges
-  Strategic viewpoint and angle

Figure 6.2: Detailed map of the location of Strategic Viewpoint 3



© Natural England. © Historic England. Contains Ordnance Survey data © Crown copyright and database rights. Ordnance Survey licence number 100023410, 2024.

-  Council boundary
-  Cotswolds National Landscape (AONB) boundary
-  Conservation area
-  Strategic viewpoint and angle



## Viewpoint Information

**Grid reference:** ST 60441 83860

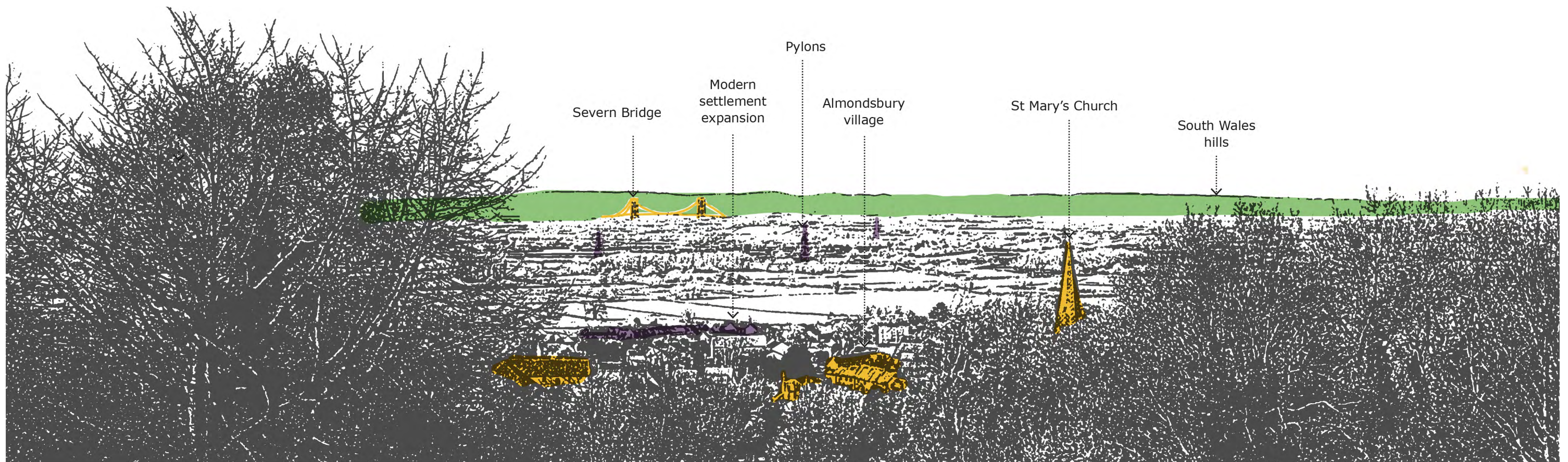
**View location:** Almondsbury scenic viewpoint at Over Lane.

**View direction:** View north-west and west over LCA 20: Pilning Levels, and towards LCA 21: Severn Shoreline and Estuary.

**Relationship with Visually Important Hillside (VIH):** The viewpoint is located along the Severn Ridges VIH.

**Experienced by:** Residents and pedestrians along Over Lane, recreational users of the open access land on Almondsbury Hill and public footpaths (OAY/14 and OAY/16) and transient views for cyclists and motorists travelling along Over Lane.

Figure 6.3: View Composition of Strategic Viewpoint 3



 Key landscape feature

 Landmark / historic feature


 Detractive feature

Figure 6.4: Full Panoramic Photograph of Strategic Viewpoint 3



Strategic Viewpoint 3: Almondsbury Scenic Viewpoint



Strategic Viewpoint 3 (continued)



## Characteristics

### Popularity, access and facilities

- The viewpoint location is symbolised as a promoted viewpoint on OS mapping and is marked on Google Maps as 'Severn Valley Scenic Point' and is likely to attract many visitors as a result.
- The viewpoint is referenced within the Almondsbury Conservation Area Appraisal and Management Plan [See reference 1] stating *"the view from the Severn Valley scenic viewpoint along Over Lane...overlooks both the Conservation Area, St. Mary's Church and the Levels"* and that *"spectacular views across the Severn Estuary and Levels and to the hills of South Wales beyond are afforded from Upper Almondsbury"*.
- Views from this viewpoint are representative of those described in LCA 18: Severn Ridges, which notes that *"the scarp provides frequent expansive views west over the flat, low-lying Levels, towards the Severn Estuary and across to South Wales and the Forest of Dean"*.
- The viewpoint is publicly accessible, located along footpath OAY/16 which runs parallel with the pavement along Over Lane, and located on open access land (which covers the small area of woodland and grassland on Almondsbury Hill).
- Benches, litter bins and a small lay-by are provided at the viewpoint to facilitate enjoyment of the view.
- A toposcope is located 120m to the north-east of the viewpoint, on Almondsbury Tump.

### Quality, value and features of the view

- An elevated viewpoint on the edge of the Severn Ridges VIH that provides a panoramic view (180°) over the surrounding lower-lying 'levels'

landscape (characterised by flat, small and regular fields, and blocks of woodland), extending to the Severn Estuary and to the hills of South Wales beyond which provide a distinctive backdrop. The woodland on the scarp slope partially encloses the view when in leaf, with the view becoming more open in the winter months.

- The Severn Bridge (Grade I listed) and Prince of Wales Bridge form notable landmark features seen within the view (located 7.5km and 7km from the viewpoint, respectively).
- Located within the Almondsbury Conservation Area, this viewpoint provides views of the historic settlement of Almondsbury village nestled at the foot of the scarp slope, and the distinctive diamond-patterned lead spire of The Church of St Mary (Grade I listed) is visible through trees.
- Some modern expansion to the north of the village of Almondsbury slightly detracts from the overall composition of the view.

## Summary

The Almondsbury Scenic Viewpoint is categorised as a SVP as it meets most of the criteria to some extent. It is a popular, well known and recorded viewpoint and likely to attract many visitors; it is noted in the South Gloucestershire Landscape Character Assessment as being a natural observation point from which to appreciate the landscape; it is located on a public footpath with benches, litter bins, parking and a toposcope facilitating enjoyment and interpretation of the view; and it provides a panoramic view that takes in the notable landscape features of the levels, Severn Estuary and hills of South Wales, the historic settlement of Almondsbury, and the landmark features of The Church of St Mary, the Severn Bridge and the Prince of Wales Bridge.

## References

# References

- 1 Almondsbury Conservation Area Character Appraisal and Management Plan (2024). Available at:  
<https://beta.southglos.gov.uk/static/56701b76f9ecc09cd4f33eddf77f5821/Almondsbury-Conservation-Plan.pdf>

Report produced by LUC

# Report produced by LUC

## **Bristol**

12th Floor, Colston Tower, Colston Street, Bristol BS1 4XE

0117 929 1997

bristol@landuse.co.uk

## **Cardiff**

16A, 15th Floor, Brunel House, 2 Fitzalan Rd, Cardiff CF24 0EB

0292 032 9006

cardiff@landuse.co.uk

## **Edinburgh**

Atholl Exchange, 6 Canning Street, Edinburgh EH3 8EG

0131 202 1616

edinburgh@landuse.co.uk

## **Glasgow**

37 Otago Street, Glasgow G12 8JJ

0141 334 9595

glasgow@landuse.co.uk

## **London**

250 Waterloo Road, London SE1 8RD

020 7383 5784

london@landuse.co.uk

## **Manchester**

6th Floor, 55 King Street, Manchester M2 4LQ

0161 537 5960

manchester@landuse.co.uk

## **landuse.co.uk**

Landscape Design / Strategic Planning & Assessment

Development Planning / Urban Design & Masterplanning

Environmental Impact Assessment / Landscape Planning & Assessment

Landscape Management / Ecology / Historic Environment / GIS & Visualisation